

# Welling Newsletter



## October 2022

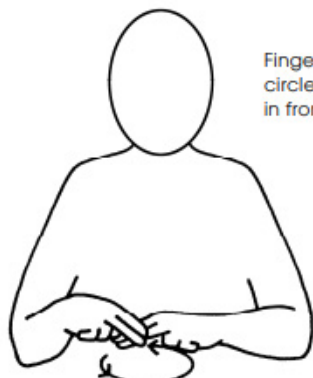
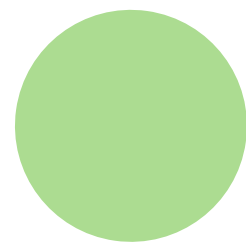
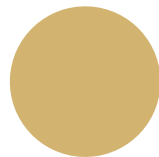
Welcome to the monthly  
edition of the monkey news



## Theme of the Month

### All About Me

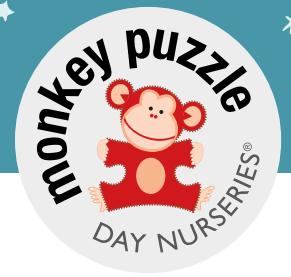
- **Song of the Month:**  
[Baby Shark](#)
- **Theme book:**  
My Family
- **Sound of the Month:**  
P for People
- **Theme sign:**  
Family



Finger spelt 'F',  
circles clockwise  
in front body

Family





## Celebrations in October

### **1st - 31st October**

Black History Month

### **2nd October**

Grandparents Day

### **4th-10th October**

World Space Week

### **5th October**

World Teachers' Day

### **6th October**

World Poetry Day

### **15th October**

World Singing Day

### **25th October**

Diwali

### **30th October**

British summer time ends

(remember clocks go back 1 hour at 2am)

### **31st October**

Halloween

## Special day for the diary:

**Friday 14th October** - dress like a rock star to celebrate world singing day. All children and staff are welcome to dress up on this day.

**Monday 31st October** - Halloween dress up day. Dress up in your favourite Halloween costume staff and children are invited to dress up for the day.

## Marvin Award

### Congratulations Jackie Hastings

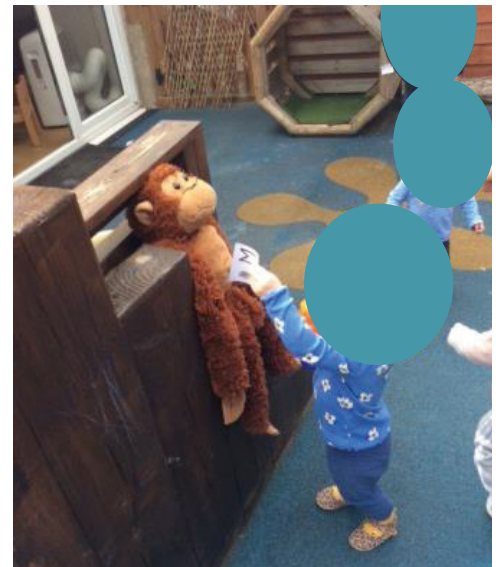
We would like to say a massive Well done to Jackie Hastings for winning staff member of the month. We are so proud of you!



## Welcome

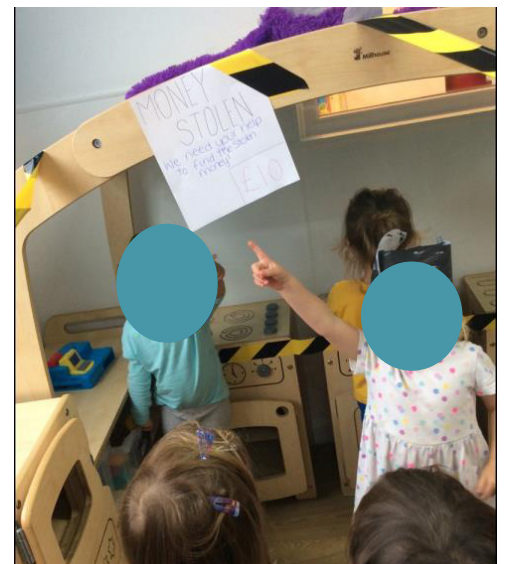
Please join us in wishing Charlotte Wright a warm welcome to the monkey Puzzle team. Charlotte will be based in our Tweenie room. Charlotte came back to us after doing her work placement with us this year!

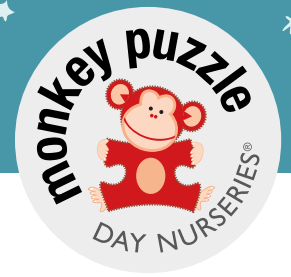
## A little bit of what we have been getting up to...



Babies have been finding out about people who help us whilst Tweenies have been searching for clues in the garden.

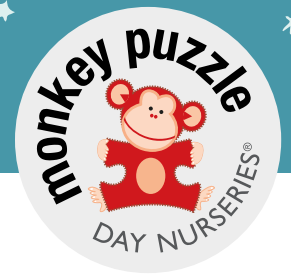
Preschool and Mini-preschool have been playing detectives. They hunted for the stolen money and found clue to lead them to the culprit.





## Exclusion Periods

<b>Hand, Foot and Mouth</b>	All blisters must have dried out before returning to nursery, usually after 5 days.
<b>Tonsillitis</b>	If prescribed antibiotics your child will be excluded for the first 48 hours of taking them.
<b>Sickness and Diarrhoea</b>	All children are excluded from nursery for at least 48 hours from their last bout of sickness or diarrhoea.
<b>Scarlet fever</b>	Excluded from nursery for the first 48 hours of antibiotics.
<b>Eczema</b>	Creams must be new and unsealed- Parents consent is required on medication form
<b>Measles</b>	Excluded for 4 days from the onset of the rash.
<b>Ringworm</b>	Excluded for 48 hours after applying first course of cream.
<b>Chicken pox</b>	All spots must be fully scabbed over before returning to nursery. This is usually around 5-7 days from when the last spot appears.
<b>Head lice</b>	Excluded from nursery until cleared form head lice.
<b>Infant Suspension Calpol/Nurofen</b>	<p>If a child is presenting a fever, we will try to bring it down naturally however if medication is required this can only be administered once during the child's session at nursery. In this case, if a child has longer than 4 hours left of their session we will ask for the parents to arrange collection for the child. This is due to only being able to administer the medication once; if the child has a fever after the medication has worn off we would be unable to give them anymore.</p> <p>If a child has arrived at nursery after having Infant suspension the same day, they will be unable to attend that day's session. This is for the same principles as the previous policy. We apologise for any inconvenience caused.</p>
<b>Conjunctivitis</b>	Children will be excluded till they are fully clear of infection and free of any discharge. Any eye prescriptions may only be administered after 48 hours.
<b>Prescribed Medication</b>	Children must be on medication for a minimum of 48 hours before returning to nursery. Medication can only be administered after the 48-hour exclusion even if your child has previously had the medication.



## Reminders

### **Absence reporting procedure:**

Please ensure that you email to confirm all absences including planned days outs, holidays and sickness.

Please explain the nature of the illness in your email so that we can ensure we take necessary steps to safeguard the health of all our children.

When visiting abroad please tell us where you are going including any stopovers on flights as well as your travel dates.

We are legally obliged to record all children's absence as part of our safeguarding procedure.

Please email: [manager@monkeypuzzlewelling.co.uk](mailto:manager@monkeypuzzlewelling.co.uk)

### **Invoices and voucher payments please contact - [Jenny@monkeypuzzlewelling.co.uk](mailto:Jenny@monkeypuzzlewelling.co.uk)**

Invoices will be emailed out to all parents from our management software. Password for invoice will be set as your child's first name in lower case.

Where parents have more than one child it will be set as the eldest child's first name in lower case.

If you would like to change your voucher amount we will need to be notified by the 10th of the month. For example, if you would like to pay in vouchers for May you will need to notify us by the 10th April.

With voucher payments please ensure you set them to automatic release on or around the 27th of the previous month so that the funds clear in time for the 1st of the month.

### **Two Year Checks**

A gentle reminder about Two-year checks. Please could parents inform the nursery when you are given a date for your child's two-year check. This will allow us to complete the two-year progress check so that you can take it along to your progress meeting.

### **Terms and conditions:**

2 full calendar months written notice is required if you no longer require your nursery place.

The notice is also required if you wish to withdraw your child from the nursery or if you wish to reduce the number of days your child attends the nursery. Fees are payable during this notice period.

We reserve the right to charge interest on late fees at the statutory rate calculated daily, or rate of interest set by the court (which ever is higher), plus an administration charge of 25 pounds unless stated otherwise.



Follow  
us on  
Facebook