

# Welling Newsletter



September 2023

## Welcome to our September Newsletter!

This month, our theme is "All About Me," providing a wonderful opportunity for the children to learn about themselves and their friends as they settle into their new environment and embark on the next stage of their journey.

### Theme of the month:

All About Me

#### ■ Our theme book for this month is:

A Superpower Like Mine

#### ■ The sound of the month:

"M" for Me

#### ■ The theme sign is:

Family



## Celebrations in June

We have several exciting celebrations lined up this month. Which day are you looking forward to learning more about?

6th September - Read a Book Day

8th September - International Literacy Day

9th September - Teddy Bear Day

13th September - Roald Dahl Story Day

16th September - International Red Panda Day

19th September - Talk Like a Pirate Day

23rd September - International Day of Sign Language

24th September - International Rabbit Day

## Employee of the Month

Congratulations to Morgan, our dedicated and helpful staff member who always puts the children first. Morgan has also recently completed her Level 3 childcare qualification. Thank you for your hard work!

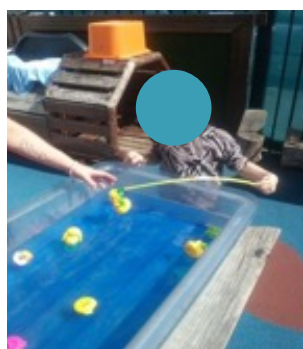
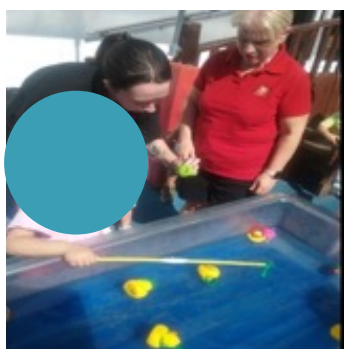
## Recognition

If you would like to thank a member of staff for exceptional care, teaching, or going above and beyond, please fill out a Marvin Award certificate located by the front door and hand it to a staff member. Your recognition is greatly appreciated.



## Preschool Activities

Our Preschool children have been exploring the world of film making. They designed storyboards and created their own film, which they enjoyed watching. They also practiced their math skills with a game of hook the duck



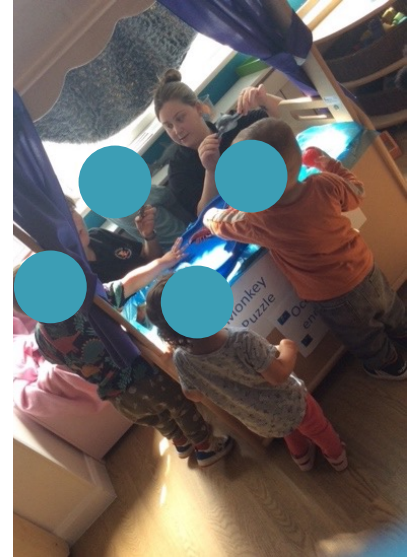
## Baby Activities

Our babies have been engaging with the song "Old MacDonald Had a Farm" through a farm sensory tray. They explored different materials and learned about animal noises and musical sounds.



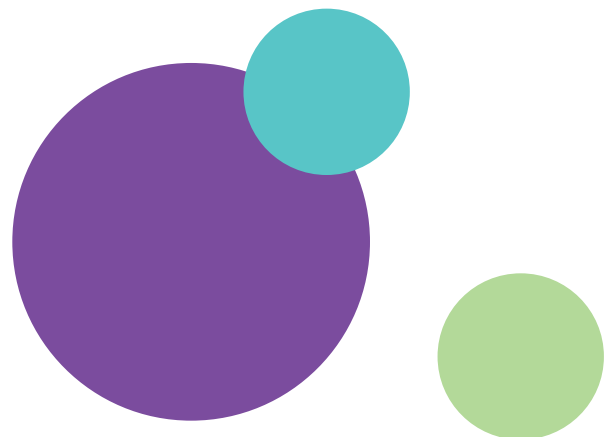
## Tweenie Activities

Our tweenies put on a spectacular show featuring under the sea creatures. They learned about different sea creatures, their origins, and what they eat. They also mimicked the sounds of each animal and sang under the sea and animal songs.



## Building and Construction Activities

Our children have enjoyed multiple activities where we took on the role of a builder. They were fascinated while learning about cause and effect while creating their very own cement! By combining different ingredients, the children were able to make predictions and learn through trial and error, opening a world of imagination. We continued to use the cement mixtures made by the children to create our very own models. This really showed off the children's imagination as they created their very own masterpieces ranging from houses, rockets, pyramids, and even a space station.



## Ideas for Home Learning

These activity ideas are a great way to help support your child in their new transitional stage and offer a great opportunity to extend their nursery learning experience within the home environment.

- **Self portraits**
- **Family tree**
- **Body tracing**
- **Feelings wheel**
- **My family activity**
- **Puppet making In Indian**



We hope you have a fantastic month exploring the theme of "All About Me" with your child. As always, if you have any questions or concerns, please don't hesitate to reach out to us.





## Exclusion Periods

<b>Hand, Foot and Mouth</b>	All blisters must have dried out before returning to nursery, usually after 5 days.
<b>Tonsillitis</b>	If prescribed antibiotics your child will be excluded for the first 48 hours of taking them.
<b>Sickness and Diarrhoea</b>	All children are excluded from nursery for at least 48 hours from their last bout of sickness or diarrhoea.
<b>Scarlet fever</b>	Excluded from nursery for the first 48 hours of antibiotics.
<b>Eczema</b>	Creams must be new and unsealed- Parents consent is required on medication form
<b>Measles</b>	Excluded for 4 days from the onset of the rash.
<b>Ringworm</b>	Excluded for 48 hours after applying first course of cream.
<b>Chicken pox</b>	All spots must be fully scabbed over before returning to nursery. This is usually around 5-7 days from when the last spot appears.
<b>Head lice</b>	Excluded from nursery until cleared form head lice.
<b>Infant Suspension Calpol/Nurofen</b>	<p>If a child is presenting a fever, we will try to bring it down naturally however if medication is required this can only be administered once during the child's session at nursery. In this case, if a child has longer than 4 hours left of their session we will ask for the parents to arrange collection for the child. This is due to only being able to administer the medication once; if the child has a fever after the medication has worn off we would be unable to give them anymore.</p> <p>If a child has arrived at nursery after having Infant suspension the same day, they will be unable to attend that day's session. This is for the same principles as the previous policy. We apologise for any inconvenience caused.</p>
<b>Conjunctivitis</b>	Children will be excluded till they are fully clear of infection and free of any discharge. Any eye prescriptions may only be administered after 48 hours.
<b>Prescribed Medication</b>	Children must be on medication for a minimum of 48 hours before returning to nursery. Medication can only be administered after the 48-hour exclusion even if your child has previously had the medication.



## Reminders

### **Absence reporting procedure:**

Please ensure that you email to confirm all absences including planned days outs, holidays and sickness.

Please explain the nature of the illness in your email so that we can ensure we take necessary steps to safeguard the health of all our children.

When visiting abroad please tell us where you are going including any stopovers on flights as well as your travel dates.

We are legally obliged to record all children's absence as part of our safeguarding procedure.

Please email: [Parv@monkeypuzzlewelling.co.uk](mailto:Parv@monkeypuzzlewelling.co.uk)

### **Invoices and voucher payments please contact - [Jenny@monkeypuzzlewelling.co.uk](mailto:Jenny@monkeypuzzlewelling.co.uk)**

Invoices will be emailed out to all parents from our management software. Password for invoice will be set as your child's first name in lower case.

Where parents have more than one child it will be set as the eldest child's first name in lower case.

If you would like to change your voucher amount we will need to be notified by the 10th of the month. For example, if you would like to pay in vouchers for May you will need to notify us by the 10th April.

With voucher payments please ensure you set them to automatic release on or around the 27th of the previous month so that the funds clear in time for the 1st of the month.

### **Two Year Checks**

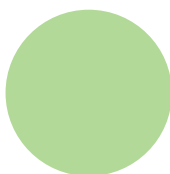
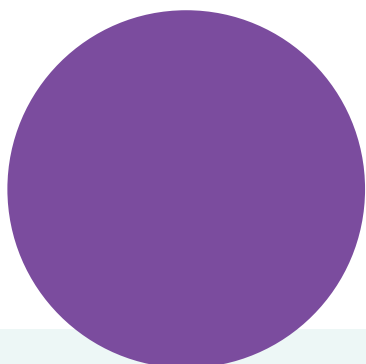
A gentle reminder about Two-year checks. Please could parents inform the nursery when you are given a date for your child's two-year check. This will allow us to complete the two-year progress check so that you can take it along to your progress meeting.

### **Terms and conditions:**

2 full calendar months written notice is required if you no longer require your nursery place.

The notice is also required if you wish to withdraw your child from the nursery or if you wish to reduce the number of days your child attends the nursery. Fees are payable during this notice period.

We reserve the right to charge interest on late fees at the statutory rate calculated daily, or rate of interest set by the court (which ever is higher), plus an administration charge of 25 pounds unless stated otherwise.



Follow us on  
Facebook