

Welling Newsletter

December 2023



It's time for our December Nursery Newsletter!

December Theme This month, we are diving into the festive spirit with our theme of Christmas! It's an exciting opportunity for the children to learn about how Christmas is celebrated all around the world.

Our theme book for this month is "The Night Before Christmas" by Clement C Moore. It's a classic tale that will surely bring joy and excitement to the little ones.

The sound of the month is "t" for tree, and our theme sign is Christmas. Let's get ready to explore the magic of this holiday season!

Celebrations this month We have a line-up of exciting celebrations this month that we can't wait to share with the children. From National Tree Week to International Cheetah Day, there's something for everyone to learn and enjoy. Which day are you most looking forward to?

26th November to 3rd December National Tree Week

3rd December International Day of People with Disabilities.

4th December International Cheetah Day

5th – 6th December St Nicholas's Day

7th December Christmas Jumper Day

7th – 15th December Hanukkah

8th December – Bodhi Day

10th December – Human Rights Day

Newsletter



Christmas Jumper Day:

Save the Children do vital work around the world keeping children safe, healthy and learning. As a nursery that is committed to children, this is very close to our hearts..

This year Save the Children's Christmas Jumper Day is on December 7th. We encourage all parents to dress their children in festive Christmas jumpers and make a donation to Save the Children on our Just Giving Page. Let's spread the joy and help children around the world stay safe, healthy, and learning.



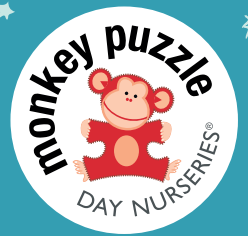
Our Just Giving page can be found on

www.christmas.savethechildren.org.uk/fundraising/CJD230001846

Reminders

We also want to remind you about some changes to the 2-year review process in Bexley Borough. We have emailed all parents with the new process, but if you have any questions or concerns, please don't hesitate to reach out to us. We're here to support you.

Newsletter



New Staff

Let's give a warm welcome to our new staff members who joined our Monkey Puzzle family in November! Khloe is starting her childcare journey, and Anna brings experience from various fields. They are both excited to build strong relationships with our children and contribute to their growth and development.

Congratulations to Morgan, our Employee of the Month! Morgan has been doing an outstanding job at Mini-preschool, bringing joy and learning to the children every day. We appreciate her dedication and the valuable contributions she makes to our team. Thank you, Morgan!



Medication

As we enter the winter season, it's important to remember our medication policy. If you administer Calpol to your child at home in the morning, please keep in mind that they won't be able to attend nursery. This is to ensure their safety and well-being. If you have any questions, feel free to reach out to us or check our policies and procedures on the website.

Christmas Break

Please note that the nursery will be closed for the Christmas Break. Our last day of operation will be on December 20th, and we will reopen on January 2nd. We hope you have a wonderful holiday season filled with love and joy!

Let's take a moment to appreciate some of the fantastic learning experiences our children had in November. They explored animal homes and habitats, created their own bird nests, and even got creative with fireworks-inspired artwork. We're proud of their curiosity and enthusiasm for learning!

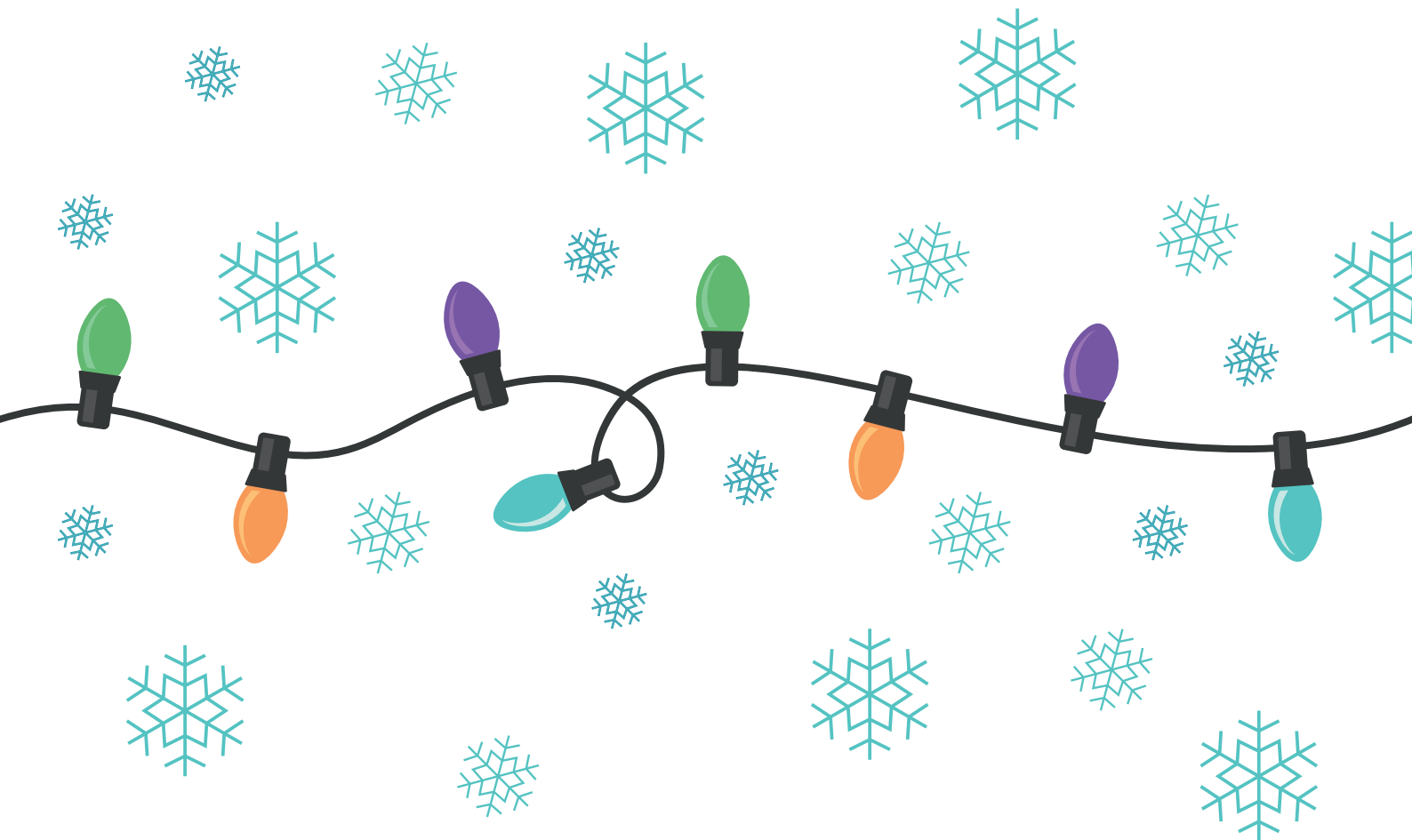


Newsletter



Looking for some fun activities to do at home? Here are a few ideas to support your child's understanding of our Christmas theme:

- Elf on the shelf
- Creating Christmas gift lists
- Making Christmas cards and decorations
- Building snowmen with marshmallows
- Taking a walk in the community to talk about and the festive lights and decorations
- Sharing Christmas stories together, such as "Stickman," "The Nativity," and "The Snowman"



Exclusion Periods

Hand, Foot and Mouth

All blisters must have dried out before returning to nursery, usually after 5 days.

Tonsillitis

If prescribed antibiotics your child will be excluded for the first 48 hours of taking them.

Sickness and Diarrhoea

All children are excluded from nursery for at least 48 hours from their last bout of sickness or diarrhoea.

Scarlet fever

Excluded from nursery for the first 48 hours of antibiotics.

Eczema

Creams must be new and unsealed- Parents consent is required on medication form

Measles

Excluded for 4 days from the onset of the rash.

Ringworm

Excluded for 48 hours after applying first course of cream.

Chicken pox

All spots must be fully scabbed over before returning to nursery. This is usually around 5-7 days from when the last spot appears.

Head lice

Excluded from nursery until cleared from head lice.

Infant Suspension Calpol/Nurofen

If a child is presenting a fever, we will try to bring it down naturally however if medication is required this can only be administered once during the child's session at nursery. In this case, if a child has longer than 4 hours left of their session we will ask for the parents to arrange collection for the child. This is due to only being able to administer the medication once; if the child has a fever after the medication has worn off we would be unable to give them anymore.

If a child has arrived at nursery after having Infant suspension the same day, they will be unable to attend that day's session. This is for the same principles as the previous policy. We apologise for any inconvenience caused.

Conjunctivitis

Children will be excluded till they are fully clear of infection and free of any discharge. Any eye prescriptions may only be administered after 48 hours.

Prescribed Medication

Children must be on medication for a minimum of 48 hours before returning to nursery. Medication can only be administered after the 48-hour exclusion even if your child has previously had the medication.



Newsletter



Reminders

Absence reporting procedure:

Please ensure that you email to confirm all absences including planned days outs, holidays and sickness.

Please explain the nature of the illness in your email so that we can ensure we take necessary steps to safeguard the health of all our children.

When visiting abroad please tell us where you are going including any stopovers on flights as well as your travel dates.

We are legally obliged to record all children's absence as part of our safeguarding procedure.

Please email: Parv@monkeypuzzlewelling.co.uk

Invoices and voucher payments please contact - Jenny@monkeypuzzlewelling.co.uk

Invoices will be emailed out to all parents from our management software. Password for invoice will be set as your child's first name in lower case.

Where parents have more than one child it will be set as the eldest child's first name in lower case.

If you would like to change your voucher amount we will need to be notified by the 10th of the month. For example, if you would like to pay in vouchers for May you will need to notify us by the 10th April.

With voucher payments please ensure you set them to automatic release on or around the 27th of the previous month so that the funds clear in time for the 1st of the month.

Two Year Checks

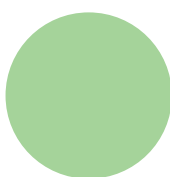
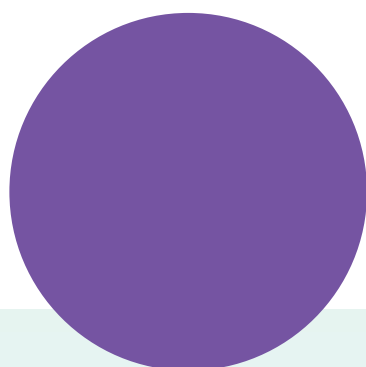
A gentle reminder about Two-year checks. Please could parents inform the nursery when you are given a date for your child's two-year check. This will allow us to complete the two-year progress check so that you can take it along to your progress meeting.

Terms and conditions:

2 full calendar months written notice is required if you no longer require your nursery place.

The notice is also required if you wish to withdraw your child from the nursery or if you wish to reduce the number of days your child attends the nursery. Fees are payable during this notice period.

We reserve the right to charge interest on late fees at the statutory rate calculated daily, or rate of interest set by the court (which ever is higher), plus an administration charge of 25 pounds unless stated otherwise.



Follow us on
Facebook